



## Newsletter, #58 Summer 2020

[www.evergreenconservancy.org](http://www.evergreenconservancy.org)

PO Box 0783, Indiana, PA 15701 [evergreenconservancy@gmail.com](mailto:evergreenconservancy@gmail.com)

### Evergreen Award -Tammie Robinson Presented Evergreen Award at Blue Spruce Park

Tammie Robinson was presented the 2020 Evergreen Award on July 21 at Blue Spruce Park by Cindy Rogers and Bob Lankard. Normally the award is presented at Evergreen Conservancy's annual meeting but it was cancelled this year



Bob and Cindy giving  
Tammie her award



Doug Beri who nominated  
Tammie from ICCD

Tammie was nominated by Douglas Beri - District Manager of the Indiana County Conservation District. Tammie has been the office administrator at the Conservation District for more than 35 years. It is Tammie's involvement with the Indiana County Envirothon that made her award worthy. The Envirothon is designed to test high school students' knowledge of Pennsylvania's natural resources and environmental sciences. Tammie works with the Conservation District watershed specialist to coordinate volunteers, agency partners, day-off programming, and tests. Since the start of the Envirothon in 1987 Tammie has been the cornerstone in making it a yearly success. She was instrumental in starting a junior high Envirothon in 1999. She also helps raise money to support a scholarship fund for participants that has raised \$36,000.

Tammie was also a board member of Friends of the Parks for four years. In this extraordinary year because of the pandemic she organized a "virtual Envirothon". This was the first online Envirothon held in Pennsylvania.

Tammie reflected on the numbers of young people she has influenced as a result of the Envirothon since its inception 37 years ago. She is anticipating hosting Envirothon participants whose parents were involved in the first Envirothon.



*Due to the COVID virus we had to cancel our annual picnic when we normally presented our Evergreen Award. We Presented Tammie with her award on July 21, 2020 at Blue Spruce park.*

### NEW!!! – See Our New STORY MAPS!

Check out our new post on the web site... what do you think of our new story maps? These were developed for Evergreen Conservancy by Gabriella Gillett during her internship through IUP

If you are looking for a place to hike or walk in Indiana County see our new [Hiking Trails Story Map](#). If you have a hiking trail that you think should be included or any sites of ecological importance please let us know by emailing us at [evergreenconservancy@gmail.com](mailto:evergreenconservancy@gmail.com).

Check out our new story map about sites of ecological / environmental significance. Many of these sites are points on our [Eco Geocache Trail](#). See our [Ecological Points of Importance in Indiana County Story Map](#).

### Board Members

Cindy Rogers - President • Malcolm Hermann - Vice president • Becky Snyder -Treasurer  
Tara Binion - Secretary • Dan Boone • Bob Lankard • John Dudash • Mike Tyree  
Paul Yacovone • David Janetski • Shannon Kundla

### OUR MISSION:

To advance the preservation, protection and stewardship of Natural, Cultural and Historical Resources in and around Indiana County, PA

## Walmart Registry

Want to donate to the Evergreen Conservancy but not sure how? We have partnered with Walmart's Registry for Good and have registered for items that our organization needs. You can log on to Walmart.com, and under the drop-down menu, click on Walmart Services. You can then click on Registry for Good. It will direct you to a page that shows the registries in the Indiana PA area. Once you add the items to your cart, you can pay and have them shipped to Evergreen Conservancy! It is that easy!

Go to [www.walmart.com/registry/registryforgood/welcome](http://www.walmart.com/registry/registryforgood/welcome) and look for Evergreen Conservancy; or just click here:

**Click Here to Help Us  
With Our Wish List.**



## Grant News

We received a \$1,200.00 grant from Dominion Energy Charitable Foundation which is dedicated to the economic, physical and social health of the communities served by Dominion Energy companies. Western Pennsylvania Conservancy (WPC) administered the grant. The grant will be used for data logging maintenance and our newsletter costs. Much thanks to both Dominion Energy and WPC.

Colcom Foundation reached out to us with the following: ... "the uncertainty we are facing has impacted the non-profit community particularly hard. In recognition of the challenges you may face and the relationship that brings us together, the Board of Directors of Colcom Foundation has awarded this grant to be utilized at your discretion for general operating purposes". They very generously gave us a \$5,000 grant.

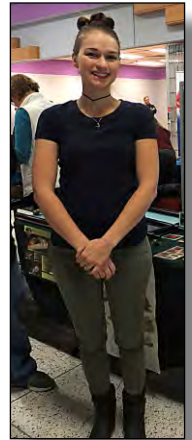
## Environmental Education News

Unfortunately most of our programs had to be cancelled this year due to the COVID virus. We did do a Tanoma tour on the 2nd to a small but very interested group.

We feel we can safely do tours outdoors for small groups so if you know anyone interested in doing a tour let us know.

## AmeriCorps Volunteer Monica Lee

Monica will finish out her first term with us on August 7th but will be rejoining us for a second full year term again on August 20th. We are very excited and pleased that she will be returning for a second term.



## EcoTour Updates

**Get your passports at any one of the following locations:**

Indiana Tourist Bureau, Indiana Free Library, Blue Spruce Park office, Yellow Creek State Park office, Blairsville Community Development Office, Solar Array cache site in Smicksburg or the Indiana Conservation District office on Indian Springs Road if they are open. Contact us and we can arrange for you to get a passport or your geo coin when you are done. Go on a fun adventure! Go to [evergreenconservancy.org/indiana-county-eco-tour/indiana-county-geotrail/coordinates-and-links/](http://evergreenconservancy.org/indiana-county-eco-tour/indiana-county-geotrail/coordinates-and-links/) for all 20 of our eco geocache trail sites (temporarily one cache 9"Make way for the Flood") is out of commission but you can still get your coin with the 19 sites. Trade that completed passport in for your very own trackable geo coin in the shape of Indiana County!

## Blue Spruce Road Trash Pick Up Rescheduled September 5th

Evergreen Conservancy will conduct a pick-up of trash on Blue Spruce Road on Saturday September 5th beginning at 9 am. Volunteers are requested to park in the lot nearest the park office. Shuttles will transport volunteers to various points along the road. Our pick up in the spring was cancelled so we will be picking up a years' worth of trash.

Unlike the Hoodlebug Trail Blue Spruce Road is open to through traffic so volunteers will be provided with protective vests and urged to be alert to oncoming traffic. The park will post signs alerting traffic to the presence of work crews. Volunteers also will be asked to wear masks at appropriate times and observe social distancing.

In our last litter pick-up we learned that very little trash is lying several feet from the road. Instead much of the trash is found "down over the bank". Thus some participants will deal with rough terrain, heavy vegetation, and exposure to ticks.

Evergreen Conservancy will provide bags, protective vests, and gloves although some may wish to use their own. Last year we were done by 11 am.

We have rescheduled our litter pick up for September 5th, beginning at 9 am. Park in the lot nearest the park office. The conservancy will provide bags, orange vests, and gloves (some prefer to bring their own). This will be our second pick up of Blue Spruce Road. We no longer do the Hoodlebug Trail. Volunteers are reminded that compared to the trail Blue Spruce Road is open to traffic so vests are required and caution is advised. Also note that most of the trash picked up in the fall was on the "other side of the guard rail" so some may have to navigate rough terrain. We will take COVID virus precaution for outdoors situations. More information to come.

## Bags to Benches

We completed our goal of collecting over 500 pounds of plastic by August 1st! A big thanks to everyone who saved plastic for us and kept all that plastic out of the landfills. We submitted our poundage to Trex and will be receiving our bench in the near future. We have decided to donate the bench to the Chevy Chase Community Center. Continue to save your plastic and drop it off because we are continuing to collect plastic for a second round. There is a bin outside the "Y" and we are hoping to get the one back outside the borough building but that is not yet out. If you have plastic you can email us at [evergreenconservancy@gmail.com](mailto:evergreenconservancy@gmail.com) and we may be able to pick it up.



## Tanoma Update

The Trompe is working to increase dissolved oxygen in the first pond. We continue to do water testing on a regular basis. No other new news is good news.

DEP helped us out on 7/23/20 by bringing out equipment to blow out the pipes that run underground from pond to pond. They had gotten clogged up with iron and debris and were restricting water flow. A big thanks goes out to the DEP folks who helped with the project.

A motion activated security light has been added to the parking lot. It was deemed necessary due to a few incidents of illegal activity. Of course it's powered by the off-grid solar/wind/hydro electrical system.



*New Motion Activated,  
Security Pole Light*



*DEP Crew Flushing Underground Pipes*

## Fall Event on Hold

For more than 10 years Evergreen Conservancy has held educational/entertainment events during the spring and fall of each year. Typically they are held at the Blue Spruce Lodge and on several occasions welcomed 100 visitors. In these times having 100 people in the lodge would be illegal. Although a program could still be scheduled, any fall event is on hold at this time.

## Dates to Remember:

September 8 7:00 pm . . . . . Zoom board meeting. If you are interested in joining, us email us at [evergreenconservancy@gmail.com](mailto:evergreenconservancy@gmail.com) and we will send you a link.

First Thursday of every month

2:30 pm . . . . . Stormwater Education Partnership – Meetings are usually held at Levity but are on hold for now.

Second Wednesday of every month

9:00 am . . . . . The Senior Environment Corps (SEC) program engages volunteers mostly aged 55 and over.

SEC volunteers are engaged in numerous activities from water quality monitoring, stream habitat assessment, storm-drain stenciling, environmental education, community gardening, wildlife surveying, marking abandoned oil and gas wells, and cleaning up parks and trails. Please come to the meetings if you are interested in being involved in an active worthwhile activity and meeting new people. Indiana PASEC has people from all our watersheds and other local agencies that are interested in preserving and protecting our environment. Come join us! It meets at 9 am. Meetings are held in the pavilion at flood-way park in Homer City temporarily.



# OUR FUTURE FLIES WITH POLLINATORS

Nutrient cycling

Pollination

Biodiversity support

Erosion control

Carbon sequestration

Resources for wildlife

Food security

Raw material production

Recreation

Water filtration

Resilient ecosystems

Soil health

Pollinators provide many ecosystem services that support the health of plants, people, and the planet. Get involved at [www.pollinator.org](http://www.pollinator.org).

Meet these plants and pollinators, and learn how you can help them at <https://www.pollinator.org/poster-2020>.

Art by Fiorella Ibañez

Los polinizadores ofrecen varios servicios a los ecosistemas y contribuyen a la salud de las plantas, la gente y el planeta. Forma parte de ello en: [www.pollinator.org](http://www.pollinator.org).

Les pollinisateurs assurent plusieurs services écosystémiques qui contribuent à la santé des plantes, des personnes et de la planète. Impliquez-vous en visitant [www.pollinator.org](http://www.pollinator.org).

**POLLINATOR PARTNERSHIP**

**USGS**

**syngenta**

**WM**

**USDA**

**almonds**

**APHIS**

**Valerie**

**NAPPC**

**EEI**

**TOYOTA**

**UNITED STATES ROYALTY COUNCIL**

**USDA**

**VALERT**

**QR CODE**



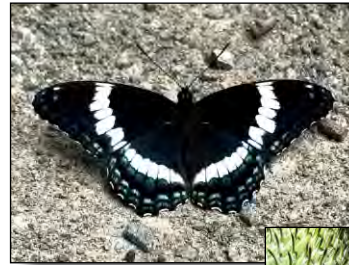
## Pollinators Come With Flowers

by Monica Lee

When people think of pollinators, many will immediately think of honey bees. The honey bee has become the main focus as a pollinator since they exchange a direct commodity, honey. There are many kinds of bees; bumble bees, leaf cutter bees, sweat bees, carpenter bees, and mining bees. Not to forget that butterflies, bats, birds, and many more insects are also pollinators. A thing that all pollinators have in common is that they are experiencing a rapid decline from increased pesticide use and the planting of non-native plants in addition to a decrease in habitat. As pollinators rely on nectar and pollen to sustain their populations, 90% of all flowering plants need pollinators to produce seeds to sustain their populations. Additionally, 1/3 of human food crops are dependent on pollinators where they are helping to contribute to the human food supply.

Having native plants for native pollinators is important as they have grown to coexist together, resulting in the best yields. Non-native plants may be beneficial in some ways, yet they could also become an invasive species, outcompeting native plants needed in current ecosystems. Native pollinators also may not be able to utilize non-native plants the same way.

What can you do to help pollinators? Reduce pesticide and insecticide use, plant native flowers, and create homes for pollinators like a bat box or invent a bee hotel. The Indiana Community Garden has recently created a pollinator meadow with an awarded grant. The native plants will offer an increase in biodiversity among their food crops and other native flowers that reside at the garden. Although the first year is a slower process, check in at the garden to see the meadow flourish and progress.



## Turtles at Tanoma

One day when John and Paul were out at Tanoma doing water testing they happened to notice two turtles laying eggs in the stone near the pavilion. They took this picture and if you look close you can see one or two eggs so far in the nest. These are wood turtles.

The following is taken from Wikipedia:

The wood turtle (*Glyptemys insculpta*) is a species of turtle common to North America. It is a genus which contains only one other species of turtle: the bog turtle (*Glyptemys muhlenbergii*). The wood turtle reaches a length of 5.5 to 7.9 in. The wood turtle exists in a geographic range from Nova Scotia in the north (and east) to Minnesota in the west and Virginia in the south. In the past, it was forced south by encroaching glaciers, skeletal remains have been found as far south as Georgia.

It spends a great deal of time in or near the water of wide rivers, preferring shallow, clear streams with compacted and sandy bottoms. The wood turtle can also be found in forests and grasslands, but will rarely be seen more than several hundred meters from flowing water. It is diurnal and is not overtly territorial. It spends the winter in hibernation and the hottest parts of the summer in estivation.

The wood turtle is omnivorous and is capable of eating on land or in water. On an average day, a wood turtle will move 354 ft., a long distance for a turtle. Raccoons are a direct threat to all life stages of this species. Inadvertently, humans cause many deaths through habitat destruction, road traffic, farming accidents, and illegal collection. When unharmed, it can live for up to 40 years in the wild and 58 years in captivity.



The area of the nest is roped off so if you are out at Tanoma please do not disturb the area.

## Membership Benefits

We are pleased to announce the following partners who have supported Evergreen Conservancy by giving discounts to card-carrying members of Evergreen Conservancy. Visit them, get your discount, and thank them for supporting Evergreen Conservancy!

Spaghetti Benders	15% discount	<a href="http://spaghettibenders.com">spaghettibenders.com</a>
Michael B's Shoe Store	\$10 off any purchase	<a href="http://www.michaelbshoes.com">www.michaelbshoes.com</a>
Plant-it Earth	15% discount	<a href="#">on FaceBook The-Plant-It-Earth-Greenhouse-And-Gardens</a>
Little Mahoning Creek Pottery	10% discount	<a href="http://www.nancysmeltzer.etsy.com">www.nancysmeltzer.etsy.com</a>
		<a href="http://littlemahoningcreekpottery.blogspot.com">littlemahoningcreekpottery.blogspot.com</a>
Homemade Restaurant	10% off total bill	<a href="http://www.thehomemaderestaurantpa.com">www.thehomemaderestaurantpa.com</a>
Artist Hand Gallery	12 oz. drip coffee \$1	<a href="http://theartistshandgallery.com">theartistshandgallery.com</a>

**JOIN OR RENEW your membership TODAY if you have not already done so for 2020.**



## Support Evergreen When Shopping

You can support Evergreen Conservancy this year by shopping! Shop local first, but if you do on line shopping do it at [smile.amazon.com](http://smile.amazon.com) and Amazon will donate to Evergreen Conservancy. Shop for everyone on your gift list this holiday at [smile.amazon.com/ch/01-0808065](http://smile.amazon.com/ch/01-0808065) and Amazon donates to Evergreen Conservancy.



*Keeping Body and Soul Together...Naturally*

Mon- Tue: 9:00am - 6:00pm Wed: 9:00am - 7:00 pm Thu - Fri: 9:00am - 6:00pm Sat: 9:00am - 5:00pm

Please support Nature's Way market in Greensburg. They support us with a generous donation!



Thanks again for the generous donation from Nature's Way of Greensburg who belongs to 1% of the Planet. Next time you are in Greensburg stop by and say thanks to them!

1% of the Planet is a global network of businesses, nonprofits and individuals working together for a healthy planet. Businesses that join 1% for the Planet commit to giving 1% of total sales each year to your choice of our approved nonprofit partners. You can get involved! Joining is easy – go to [www.onepercentfortheplanet.org/tell-us-about-your-organization](http://www.onepercentfortheplanet.org/tell-us-about-your-organization). 1% of the Planet brings dollars and doers together to accelerate smart environmental giving. The Planet needs you NOW.

## Join Evergreen Conservancy Today!

Support the all-volunteer Evergreen Conservancy and its mission through your membership.

Name: \_\_\_\_\_

Phone: \_\_\_\_\_

Address: \_\_\_\_\_

E-mail: \_\_\_\_\_

City: \_\_\_\_\_

State: \_\_\_\_\_ Zip: \_\_\_\_\_

Membership Levels:

\_\_\_\_\_ \$15: Student \_\_\_\_\_ \$25 \_\_\_\_\_ \$45 \_\_\_\_\_ \$70 \_\_\_\_\_ \$100

\_\_\_\_\_ \$1 Youth (17 and under) \_\_\_\_\_ \$ Other \_\_\_\_\_ \$75: Business/Org

Additional Donation: \$\_\_\_\_\_

Complete this form and send check to:

Evergreen Conservancy, PO Box 0783, Indiana, PA 15701



I am interested in volunteering:

\_\_\_\_ as a board member \_\_\_\_ on a committee (finance, PR fundraising) \_\_\_\_ with water monitoring field work  
 \_\_\_\_ on Legal issues \_\_\_\_ with grant writing \_\_\_\_ environmental education \_\_\_\_ social media \_\_\_\_ Homer City gardens plots  
 \_\_\_\_ with fundraising activities (making crafts or manning a table at sales) \_\_\_\_ other \_\_\_\_\_