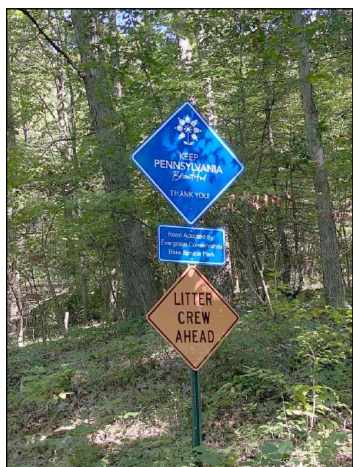




**Newsletter, #59
Fall 2020**

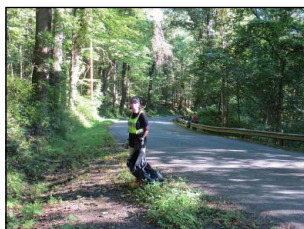
www.evergreenconservancy.org

PO Box 0783, Indiana, PA 15701 evergreenconservancy@gmail.com



**Blue Spruce Road Trash Pick Up
September 5th**
A successful clean-up of Blue Spruce Road

After two clean-ups were cancelled – one by COVID and more recently by rainy weather – Evergreen Conservancy conducted a very successful litter pick-up of Blue Spruce Road. It was a beautiful day in the Blue Spruce area and a recent record 13 showed up. There were also some who had not previously participated in a conservancy event. Even though it was the first clean up in near 12 months there was not much litter. Eight bags were collected. An observation: all volunteers were wearing masks... most of the time.



Thanks to John Dudash, JoAnne and John Ferraro, Linda Gwinn, Ed and Patricia Kennedy, Shannon Kundla, Bob Lankard, Monica Lee, Janis Long, Cindy Rogers, Rebecca Snyder, and Alan Yardconi.

Turtles at Tanoma

We have not yet seen any baby turtles coming from the nest. Research has been brought to our attention by John Ferraro about wood turtles. Sometimes the turtles hatch and remain underground for the winter and our camera did not pick up any baby turtles leaving the nest. Therefore we installed a screen over the nest. When and if the turtles decide to leave the nest they can easily crawl under the screen on their way to water.



Board Members

Cindy Rogers - President • Shannon Kundla - Vice president • Becky Snyder -Treasurer
Tara Binion - Secretary • Dan Boone • Bob Lankard • John Dudash • Mike Tyree
Paul Yacovone • David Janetski • Malcolm Hermann

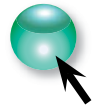
OUR MISSION:

To advance the preservation, protection and stewardship of Natural, Cultural and Historical Resources in and around Indiana County, PA

Walmart Registry a Reminder

Want to donate to the Evergreen Conservancy but not sure how? We have partnered with Walmart's Registry for Good and have registered for items that our organization needs. You can log on to Walmart.com, and under the drop-down menu, click on Walmart Services. You can then click on Registry for Good. It will direct you to a page that shows the registries in the Indiana PA area. Once you add the items to your cart, you can pay and have them shipped to Evergreen Conservancy! It is that easy!

**Click Here to Help Us
With Our Wish List.**



Go to www.walmart.com/registry/registryforgood/welcome and look for Evergreen Conservancy; or just click here:

Environmental Education News

Unfortunately most of our programs had to be cancelled this year due to the COVID virus. We did do a Tanoma tour on the 2nd to a small but very interested group.

We feel we can safely do tours out doors for small groups so if you know anyone interested in doing a tour let us know.

Tanoma Update

We continue to do water testing on site every two weeks. No changes. The Trompe is working well.

EcoTour Updates

Get your passports at any one of the following locations:

Indiana Tourist Bureau, Indiana Free Library, Blue Spruce Park office, Yellow Creek State Park office, Blairsville Community Development Office, Solar Array cache site in Smicksburg or the Indiana Conservation District office on Indian Springs Road if they are open. Contact us and we can arrange for you to get a passport or your geo coin when you are done. Go on a fun adventure! Go to evergreenconservancy.org/indiana-county-eco-tour/indiana-county-geotrail/coordinates-and-links/ for all 20 of our eco geocache trail sites (temporarily one cache 9"Make way for the Flood") is out of commission but you can still get your coin with the 19 sites. Trade that completed passport in for your very own trackable geo coin in the shape of Indiana County!

Rain Barrel Winter Maintenance

Regular maintenance for rain barrels includes clearing debris from the filter basket and cleaning out the barrel before it freezes.

- Empty, clean and rinse your rain barrel
- Do not permit water to enter the barrel during winter. Water expands when it freezes and even a small amount can cause a rain barrel to crack.
- Strong winter winds can send an empty rain barrel rolling away. You may want to store the barrel in a basement, garage or under a deck.
- If storing the barrel outside, turn it upside down or lay it on its side.



New Conservation District Home

The Indiana County Conservation District has been waiting for their new office building to be finished. Although it has already been quite some time, the current obstacle of building materials being backordered and not available when needed during the building process has delayed progress. So far, the projected moving date should be from mid-December to mid-January. The board members and employees are looking forward to the selection of native plants to surround the building on the grounds in addition to creating a pavilion. There is hope to add a variety of additional educational opportunities of sustainable landscaping in addition to the indoor educational room.



Bags to Benches

We completed our goal of collecting over 500 pounds of plastic by August 1st! A big thanks to everyone who saved plastic for us and kept all that plastic out of the landfills. Continue to save your plastic and drop it off because we are continuing to collect plastic for a second round. If you have plastic you can email us at evergreenconservancy@gmail.com and we may be able to pick it up.



The Bench has arrived and been assembled with a plaque remembering Charles Slippy and Family. We will be donating the bench to Chevy Chase Community Center.

The LWV Environmental committee did a second round of collecting and has collected over 600 pounds of plastic. We are now on our 3rd round of collecting.

Continue to save your plastic and drop it off. There is a bin outside the "Y" and one inside the door at the S&T Arena. We are hoping to get the one back outside the borough building but that is not yet out. If you have plastic you can email us at evergreenconservancy@gmail.com and we may be able to pick it up or tell you where to drop it off.

Thanks to everyone who has contributed. Remind people to stop using single use plastic items and keep plastic out of the landfill!

Learn Conservation Practices OnLine

We have scheduled our first of a three-part series of webinars dealing with backyard and urban conservation practices. It's Thursday, December 10, 12 noon. The upcoming webinar will focus on the best ways to prepare a garden for winter and updates on the efforts to install riparian strips in the county. We plan to have plenty of opportunities for participants to ask questions, so everyone can feel free to be ready to ask what they have wanted to know.

Tamathy Stage
Indiana County Conservation District
PMSC AmeriCorps

Register on Dec 10, 2020 12:00 PM EST at:

<https://attendee.gotowebinar.com/register/87795315075573774>

After registering, you will receive a confirmation email containing information about joining the webinar.

Fall Event Canceled

Dates to Remember:

December 10th	12:00 noon	Webinar on Conservation Practices, see above.
January 7th 2021	7:00 pm	Zoom board meeting. If you are interested in joining, us email us at evergreenconservancy@gmail.com and we will send you a link.
First Thursday of every month	2:30 pm	Stormwater Education Partnership – Meetings are usually held at Levy but are on hold for now.
Second Wednesday of every month	9:00 am	Pennsylvania Senior Environmental Corps – (PASEC) Meetings. The Senior Environment Corps (SEC) program engages volunteers mostly aged 55 and over. SEC volunteers are engaged in numerous activities from water quality monitoring, stream habitat assessment, storm-drain stenciling, environmental education, community gardening, wildlife surveying, marking abandoned oil and gas wells, and cleaning up parks and trails. Please come to the meetings if you are interested in being involved in an active worthwhile activity and meeting new people. Indiana PASEC has people from all our watersheds and other local agencies that are interested in preserving and protecting our environment. Come join us! It meets at 9 am. Locations will be announced close to each meeting with COVID precautions.

It looks really pretty, BUT

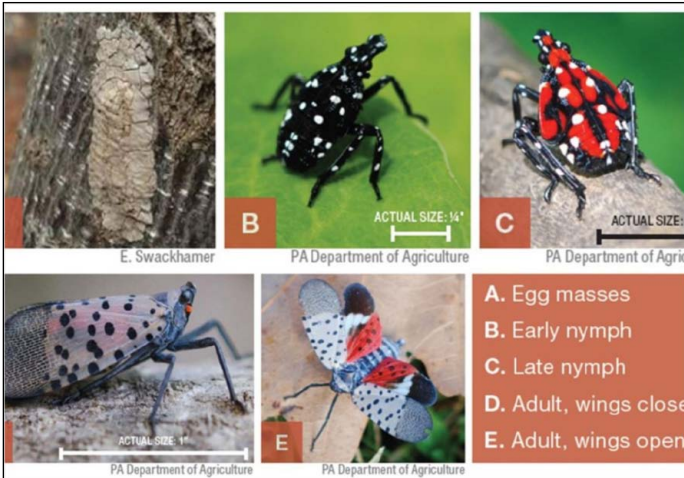
The Spotted Lanternfly causes serious damage in trees including oozing sap, wilting, leaf curling, and tree dieback. In addition to tree damage, when spotted lanternflies feed, they excrete a sugary substance, called honeydew, that encourages the growth of black sooty mold. This mold is harmless to people, however it causes damage to plants. In counties infested and quarantined for Spotted Lanternfly, residents report hundreds of these bad bugs that affect their quality of life and ability to enjoy the outdoors during the spring and summer months. Spotted Lanternflies will cover trees, swarm in the air, and their honeydew can coat decks and play equipment.



In addition to damaging trees and affecting quality of life, the Spotted Lanternfly is a huge threat to Pennsylvania's agriculture industry. They threaten billions of economic impact and hundreds of thousands of jobs for those in the grapes, apple, hops, and hardwood industries.

The Spotted Lanternfly is an invasive species native to China, Bangladesh, and Vietnam. In 2014 it was found in Pennsylvania, and has since spread to 26 counties which are now quarantined. It was just recently reported to be in Indiana County. So be on the lookout for it.

If you see a Spotted Lanternfly, it's imperative to immediately report it online at <https://services.agriculture.pa.gov/SLFReport/> or via phone by calling 1-888-4BADFLY. Especially if you are not inside the quarantine zone.



What else? Kill it! Squash it, smash it...just get rid of it. In the fall, these bugs will lay egg masses with 30-50 eggs each. These are called bad bugs for a reason, don't let them take over your county next.



The above information is taken from the PA Department of Agriculture website. https://www.agriculture.pa.gov/Plants_Land_Water/PlantIndustry/Entomology/spotted_lanternfly/SpottedLanternfly-Alert/Pages/default.aspx

Cindy Rogers

Check It Out!!! – See Our New STORY MAPS!

Check out our new post on the web site... what do you think of our new story maps? These were developed for Evergreen Conservancy by Gabriella Gillett during her internship through IUP.

If you are looking for a place to hike or walk in Indiana County see our new [Hiking Trails Story Map](#). If you have a hiking trail that you think should be included or any sites of ecological importance please let us know by emailing us at evergreenconservancy@gmail.com.

Check out our new story map about sites of ecological / environmental significance. Many of these sites are points on our [Eco Geocache Trail](#). See our [Ecological Points of Importance in Indiana County Story Map](#).

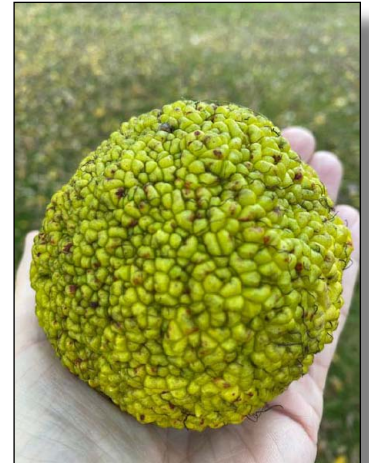
Osage Orange

Horse High, Bull Strong and Pig Tight



Monkey balls, hedge apples, bowwod, mock orange, horse apple and wild oranges- these are all names for the Osage Orange. Typically, the Osage Orange tree is a small to medium sized tree. It commonly grows 30-40 feet tall, and produces green oranges, which ripen in September or October, when they fall to the ground. The Osage Orange is a member of the mulberry family, though unlike the mulberry the oranges are not edible.

The Osage Orange Tree has a long history- they were first cultivated in the south in the early 1800's. It was said to be the best wood for fencing materials, making hubs and wheel rims for horse drawn wagons, mine support timbers, ship masts and furniture. It is an incredibly hard



wood, and decay and rot resistant. The Osage Orange trees were used as natural hedge rows- when planted together, the trees would intertwine and form a tight natural hedge, that was horse high, bull strong and pig tight. When planted together, the trees would not get as high, but when planted alone, the trees would get bigger and taller. The Osage Indians used the wood to make bows. The wood has a yellowish- orange tint to it. It is a very tough, strong and flexible tree- it does well in poor soil, extreme heat and high winds. The Osage Orange tree was an extremely popular and sought-after tree- it only lost some of its popularity when barbed wire was introduced in the United States.

The Osage Orange tree is very common in some states, especially in the southern states. In Indiana County, there are a few trees remaining. We have a tree in our yard that produces thousands (it seems more like millions) of oranges each year. Most research indicates that the trees are small to medium sized. However, this magnificent tree in the yard of my family home is several hundred years old. At an impressive height of 80-100 feet, it is approximately 5 feet in diameter, with an approximate circumference of 168 inches. This giant tree never ceases to produce piles and piles of oranges each year. Holding the record for the largest tree in the country, is an Osage Orange tree near Alexandria VA. The tree is said to be approximately 300 years old, over 60 feet tall, with branches that span over 88 feet, and a circumference of over 349 inches.

The fruit of the Osage Orange is green and round, approximately the size of a baseball. When cut open, the fruit has a strong citrus smell, and it produces a milky white (and very sticky) sap.



Though there is little scientific evidence, many people swear that the oranges chase away all manner of bugs in a house. People will cut them in half, and place them in cupboards, basements and around foundations. The folklore even goes further to not only include spiders, but roaches, mice and ants.

This is a magnificent tree. It produces lots of shade in the summer heat, and once the leaves fall, the deer will dig them up in the winter to feed on. It provides protection for many birds, and stands tall and proud. The Osage Orange tree lives up to its reputation: Horse high, bull strong and pig tight.

Shannon Kundla

Membership Benefits

We are pleased to announce the following partners who have supported Evergreen Conservancy by giving discounts to card-carrying members of Evergreen Conservancy. Visit them, get your discount, and thank them for supporting Evergreen Conservancy!

Spaghetti Benders	15% discount	spaghettibenders.com
Michael B's Shoe Store	\$10 off any purchase	www.michaelbshoes.com
Plant-it Earth	15% discount	on FaceBook The-Plant-It-Earth-Greenhouse-And-Gardens
Little Mahoning Creek Pottery	10% discount	www.nancysmeltzer.etsy.com
		littlemahoningcreekpottery.blogspot.com
Homemade Restaurant	10% off total bill	www.thehomemaderestaurantpa.com
Artist Hand Gallery	12 oz. drip coffee \$1	theartistshandgallery.com

JOIN OR RENEW your membership TODAY if you have not already done so for 2020.



Support Evergreen When Shopping

You can support Evergreen Conservancy this year by shopping! Shop local first, but if you do on line shopping do it at smile.amazon.com and Amazon will donate to Evergreen Conservancy. Shop for everyone on your gift list this holiday at smile.amazon.com/ch/01-0808065 and Amazon donates to Evergreen Conservancy.



Keeping Body and Soul Together...Naturally

Mon- Tue: 9:00am - 6:00pm Wed: 9:00am - 7:00 pm Thu - Fri: 9:00am - 6:00pm Sat: 9:00am - 5:00pm

Please support Nature's Way market in Greensburg. They support us with a generous donation!



Thanks again for the generous donation from Nature's Way of Greensburg who belongs to 1% of the Planet. Next time you are in Greensburg stop by and say thanks to them!

1% of the Planet is a global network of businesses, nonprofits and individuals working together for a healthy planet. Businesses that join 1% for the Planet commit to giving 1% of total sales each year to your choice of our approved nonprofit partners. You can get involved! Joining is easy – go to www.onepercentfortheplanet.org/tell-us-about-your-organization. 1% of the Planet brings dollars and doers together to accelerate smart environmental giving. The Planet needs you NOW.

Join Evergreen Conservancy Today!

Support the all-volunteer Evergreen Conservancy and its mission through your membership.

Name: _____

Phone: _____

Address: _____

E-mail: _____

City: _____

State: _____ Zip: _____

Membership Levels:

_____ \$15: Student _____ \$25 _____ \$45 _____ \$70 _____ \$100

_____ \$1 Youth (17 and under) _____ \$ Other _____ \$75: Business/Org

Additional Donation: \$_____

Complete this form and send check to:

Evergreen Conservancy, PO Box 0783, Indiana, PA 15701



I am interested in volunteering:

___ as a board member ___ on a committee (finance, PR fundraising) ___ with water monitoring field work
 ___ on Legal issues ___ with grant writing ___ environmental education ___ social media ___ Homer City gardens plots
 ___ with fundraising activities (making crafts or manning a table at sales) ___ other _____