



Newsletter, #63 Fall 2021

www.evergreenconservancy.org

PO Box 0783, Indiana, PA 15701 evergreenconservancy@gmail.com

Field Work

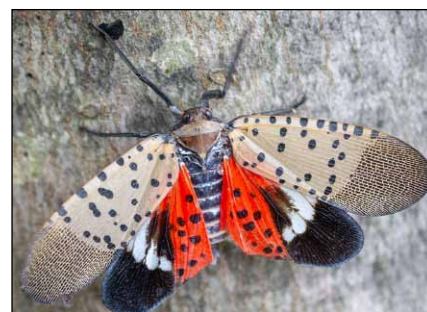


Becky, Cindy and Anna were out in the field recently working on the telemetry multiprobe water monitoring sites. We did some maintenance on the sites and pulled all the loggers to be cleaned and calibrated. They will go back in the water right away. These sites monitor the water 24/7 and send the data to the web where it can alert us if there is a change in the water quality due to an accident or pollution event. They are located on 5 different Indiana County creeks all in areas where there could potentially be a traffic accident that could impact the water. This project is done in partnership with Indiana County Emergency Management.



September 23rd, 7pm was a Virtual Webinar on the Spotted Lantern Fly.

It is in neighboring counties. How soon it will arrive in Indiana County is anyone's guess. The Spotted Lanternfly is a complex insect and has the potential to impact each one of us in many different ways. So, what can you expect when it arrives? It can kill a variety of trees and vines including grape vines and hops. We need to deal with this unwanted intruder quickly when it reaches Indiana County and your backyard. If you see it squish it! If you find a spotted lanternfly or a suspicious looking egg mass in a municipality where it is not known to exist, you should try to collect it and put it into a vial filled with alcohol to kill and preserve it, or at least take a good picture of it. Report it to the Pennsylvania Department of Agriculture (PDA) by emailing badbug@pa.gov or call the Invasive Species Hotline at 1-866-253-7189 or by calling 1-888-4BADFLY. Your discovery could add additional municipalities to the quarantined area.



Board Members

Cindy Rogers - President • Shannon Kundla - Vice president • Becky Snyder -Treasurer
Tara Binion - Secretary • Dan Boone • Bob Lankard • John Dudash • Mike Tyree
Paul Yacovone • David Janetski • Malcolm Hermann • Adriene Smochek

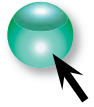
OUR MISSION:

To advance the preservation, protection and stewardship of Natural, Cultural and Historical Resources in and around Indiana County, PA

Walmart Registry, a Reminder

Want to donate to the Evergreen Conservancy but not sure how? We have partnered with Walmart's Registry for Good and have registered for items that our organization needs. You can log on to Walmart.com, and under the drop-down menu, click on Walmart Services. You can then click on Registry for Good. It will direct you to a page that shows the registries in the Indiana PA area. Once you add the items to your cart, you can pay and have them shipped to Evergreen Conservancy! It is that easy! Thank you to the folks who have donated to Evergreen Conservancy in this way. It is much appreciated!

**Click Here to Help Us
With Our Wish List.**



Go to www.walmart.com/registry/registryforgood/welcome and look for Evergreen Conservancy; or just click here:

Environmental Education News

Commonwealth Charter Academy Hosts a Program at Tanoma.

11/2/21

Folks from all over western PA attended. We tie dyed bandannas with the iron oxide from the Tanoma passive treatment system and did programs on the water cycle, water conservation and the Tanoma passive AMD system. Thanks to Adriene, the staff from Indiana County Conservation District, Monica, Nola, and Anna and 3 students from IUP: Molly, Susie and Marilyn who came out to help with the programs. It was a chilly day but was not raining so it turned out to be a good weather day. We hosted about 30 kids of all ages and their parents. Thanks to the Commonwealth Charter Academy for setting it up; we enjoyed having them all out to Tanoma. It was good to get outside and have a good time.



Blue Spruce Road Clean Up Postponed Until Spring

As you probably know the cleanup of Blue Spruce Road scheduled for October 23rd was cancelled due to rain. The Evergreen Conservancy board has postponed this activity until spring. You will be informed concerning the specific date.

Bags to Benches Project Update

Evergreen continues collecting plastic in exchange for a TREX bench in partnership with the LWV Environmental Committee of Indiana. We have donated benches to Chevy Chase Community Center, The Indiana County Conservation District, the YMCA, and the Community Garden. The next bench will be donated to Giant Eagle (our partner in the collection process). The plastic collection efforts will continue into future rounds of collection.

The purpose of all this is to keep plastic from going to the landfills. So the opportunity to recycle soft plastic is ongoing. Residents can donate grocery bags, bread bags, water case and soft drink overwraps, dry cleaning bags, ice bags, wood pellet bags, Ziploc and other reclosable bags, produce bags, bubble wrap, salt bags, and cereal bags. All bags must be clean and dry. Unfortunately, plastic bottles and all other hard plastics cannot be donated to this program. They should be donated to the Indiana County recycling program. Also please do not include any bags that have metallic lining or sound really crinkly when you crunch them.

If you want to support the bags to benches project you can take your items to the YMCA bin outside the door or the S & T arena in the bin inside the door. If you have plastic you can email us at evergreenconservancy@gmail.com and we may be able to pick it up.

Indiana County Conservation District (ICCD) News

ICCD is sponsoring two fundraising projects: Tree memorials and Green Drinks events.

The Indiana County Conservation District Memorial Tree Program offers participants an opportunity to honor a loved one or remember a special event by donating a tree to be planted on our education center grounds. These trees will serve purposes for forestry and native plant education while providing critical habitat for local wildlife. Growing for hundreds of years, trees are a long-lasting, living memorial or tribute. They also are a special way to recognize or honor someone for special occasions like anniversaries or marriages, among others. If interested contact ICCD at d.beri@iccdpa.org.

“Green Drinks” is a recurring networking and happy hour on the 4th Wednesday of every month at 5:30 pm. Each month, the event will be held at a different location and benefit a different, local, environmentally friendly or “green” project or organization. The vibe will be informal, fun, and the aim is for you to meet like-minded locals while supporting a great cause! No RSVP needed – just come! There is no cost but a donation would be appreciated. Follow the Indiana County Conservation District on Facebook for more info on this and other happenings.

Tanoma Update

We continue to monitor the water at Tanoma on a regular basis.

We submitted a grant to the Office of Surface Mines to cover construction costs related to an upgrade at Tanoma to make the system function more efficiently in the beginning of the system. Stay tuned for more on this in the near future.

EcoTour Updates

The eco geocache tour is still going strong.

You can still get your passports at any one of the following locations:

Indiana Tourist Bureau, Indiana Free Library, Blue Spruce Park office, Yellow Creek State Park office, Blairsville Community Development Office, Solar Array cache site in Smicksburg, or the Indiana Conservation District office near the Indiana County Technology Center if they are open. Contact us and we can arrange for you to get a passport or your geocoin when you are done. Go on a fun adventure! Go to <https://evergreenconservancy.org/indiana-county-eco-tour/indiana-county-geotrail/coordinates-and-links/> for all 20 of our ecology-themed geocache trail sites. Trade that completed passport in for your very own trackable geo coin in the shape of Indiana County!

Save the Date:

May 12–13, 2022 In-Person Annual Shale Network Workshop State College, PA.

2022 Theme: Ten Years of Unconventional Resource Development: Lessons Learned and Future Directions There will be a field trip, posters and a great line up of topics on many different topics that will be of interest to all. Please plan on attending.

Dates to Remember:

January 7th, 2022 . . . 6:00 PM

Evergreen Conservancy Board Meeting – Virtual – If interested please contact evergreenconservancy@gmail.com

Second Wednesday of every month

Pennsylvania Senior Environmental Corps – (PASEC) Meetings. The Senior Environmental Corps (SEC) program engages volunteers mostly aged 55 and over. SEC volunteers are engaged in numerous activities from water quality monitoring, stream habitat assessment, storm-drain stenciling, environmental education, community gardening, wildlife surveying, marking abandoned oil and gas wells, and cleaning up parks and trails. Please come to the meetings if you are interested in being involved in an active worthwhile activity and meeting new people. Indiana PASEC has people from all our watersheds and other local agencies that are interested in preserving and protecting our environment. Come join us! It meets at 9 am. Locations will be announced close to each meeting with COVID precautions.

Membership Benefits

We are pleased to announce the following partners who have supported Evergreen Conservancy by giving discounts to card-carrying members of Evergreen Conservancy. Visit them, get your discount, and thank them for supporting Evergreen Conservancy!

Spaghetti Benders	15% discount	spaghettibenders.com
Michael B's Shoe Store	\$10 off any purchase	www.michaelbshoes.com
Plant-it Earth	15% discount	on FaceBook The-Plant-It-Earth-Greenhouse-And-Gardens
Little Mahoning Creek Pottery	10% discount	www.nancysmeltzer.etsy.com
		littlemahoningcreekpottery.blogspot.com
Homemade Restaurant	10% off total bill	www.thehomemaderestaurantpa.com
Artist Hand Gallery	12 oz. drip coffee \$1	theartistshandgallery.com

JOIN OR RENEW your membership TODAY if you have not already done so for 2021.



Support Evergreen When Shopping

You can support Evergreen Conservancy this year by shopping! Shop local first, but if you do on line shopping do it at smile.amazon.com and Amazon will donate to Evergreen Conservancy. Shop for everyone on your gift list this holiday at smile.amazon.com/ch/01-0808065 and Amazon donates to Evergreen Conservancy.



Keeping Body and Soul Together... Naturally

Mon- Tue: 9:00am - 6:00pm Wed: 9:00am - 7:00 pm Thu - Fri: 9:00am - 6:00pm Sat: 9:00am - 5:00pm

Please support Nature's Way market in Greensburg. They support us with a generous donation!



Thanks again for the generous donation from Nature's Way of Greensburg who belongs to 1% of the Planet. Next time you are in Greensburg stop by and say thanks to them!

1% of the Planet is a global network of businesses, nonprofits and individuals working together for a healthy planet. Businesses that join 1% for the Planet commit to giving 1% of total sales each year to your choice of our approved nonprofit partners. You can get involved! Joining is easy – go to www.onepercentfortheplanet.org/tell-us-about-your-organization . 1% of the Planet brings dollars and doers together to accelerate smart environmental giving. The Planet needs you NOW.

Join Evergreen Conservancy Today!

Support the all-volunteer Evergreen Conservancy and its mission through your membership.

Name: _____

Phone: _____

Address: _____

E-mail: _____

City: _____

State: _____ Zip: _____

Membership Levels:

_____ \$15: Student _____ \$25 _____ \$45 _____ \$70 _____ \$100

_____ \$1 Youth (17 and under) _____ \$ Other _____ \$75: Business/Org

Additional Donation: \$ _____

Complete this form and send check to:

Evergreen Conservancy, PO Box 0783, Indiana, PA 15701



I am interested in volunteering:

___ as a board member ___ on a committee (finance, PR fundraising) ___ with water monitoring field work
 ___ on Legal issues ___ with grant writing ___ environmental education ___ social media ___ Homer City gardens plots
 ___ with fundraising activities (making crafts or manning a table at sales) ___ other _____